

Civilian Workforce In Thailand 2010



Foreword

This booklet presents an overview of civil service manpower for Fiscal Year 2010, and is a representation of the civil service workforce that can be used as a basic reference for macro manpower planning and management. The data provides the number of civil service positions and employees, grouped by position level, education, sex, and type of government administration. The information is categorized according to type of service under central agency and other autonomous public agencies, and also includes senior executive and high-level positions.

We would like to express our sincere appreciation to the Secretariat of Central Personnel Agency and to all the ministries, bureaus, and departments who have extended their cooperation and support in providing the information that has made this publication possible.

We do hope that this publication will be beneficial to government agencies and those interested.

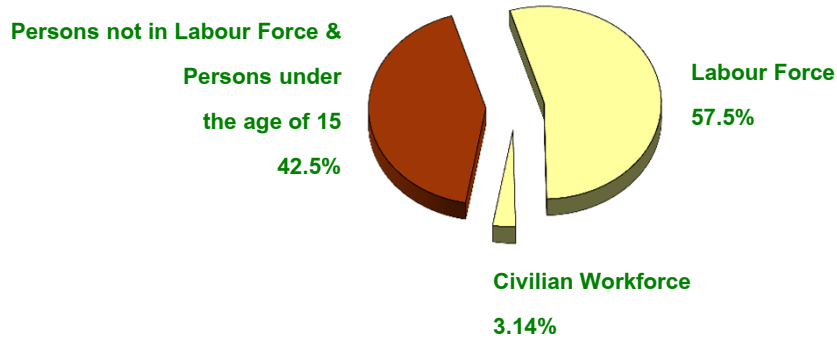
Office of the Civil Service Commission

Contents

	<i>(Page)</i>
● Population, Labour Force and Civilian Workforce	1
● Civilian Workforce	2
● Government Officials by Type of Service	3
● Government Officials by Ministry	4
Sex	
● Government Officials by Type and Sex	6
● Government Officials by Ministry and Sex	7
Education	
● Government Officials by Education	9
● Government Officials by Type and Education	10
● Government Officials by Ministry and Education	11
Position Level	
● Number of Government Officials by Type and Level	13
● Distribution of Government Officials by Type and Level	14
Government Administration	
● Government Officials by Type and Type of Government Administration	15
● Government Officials by Ministry and Type of Government Administration	16
● Government Officials by Ministry and Location	18
● Government Officials by Location	19
High-Level Positions	
● Civilian Workforce in High-Level Positions	20
● Number of Executives	21
● Executives by Level and Sex, Fiscal Year 1993-2010	22
Government Officials, Permanent Employees, Temporary Employees, Government Employees and Local Temporary Employees	23

Population, Labour Force and Civilian Workforce

Fiscal Year 2010



Population

67.2 million persons

Labour Force

38.64 million persons

(57.5% of Population)

Civilian Workforce

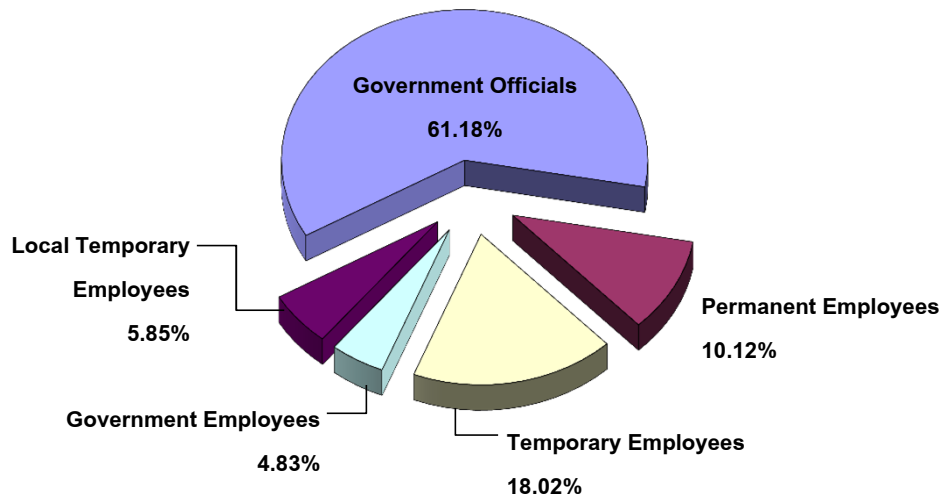
2.11 million persons

(3.14% of Population or

5.46% of Labour Force)

- Government Officials** **1,292,466 persons**
- Permanent Employees** **213,797 persons**
- Temporary Employees** **380,806 persons**
- Government Employees** **101,966 persons**
- Local Temporary Employees** **123,649 persons**

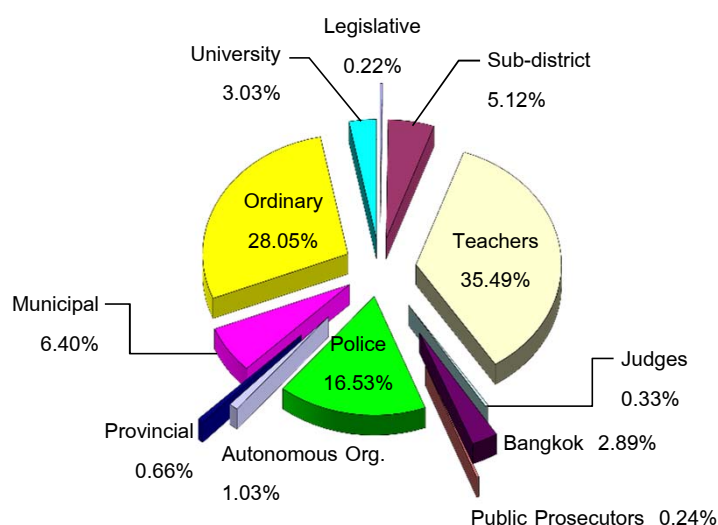
Civilian Workforce, Fiscal Year 2010



Types of Workforce	Number	%
Total	2,112,684	100.00
● Government Officials	1,292,466	61.18
● Permanent Employees	213,797	10.12
● Temporary Employees	380,806	18.02
● Government Employees	101,966	4.83
● Local Temporary Employees	123,649	5.85
Central and Provincial Administration	1,722,038	100.00
● Government Officials	1,097,662	63.74
● Permanent Employees	160,315	9.31
● Temporary Employees	362,095	21.03
● Government Employees	101,966	5.92
Local Administration	390,646	100.00
● Government Officials	194,804	49.87
● Permanent Employees	53,482	13.69
● Temporary Employees	18,711	4.79
● Local Temporary Employees	123,649	31.65

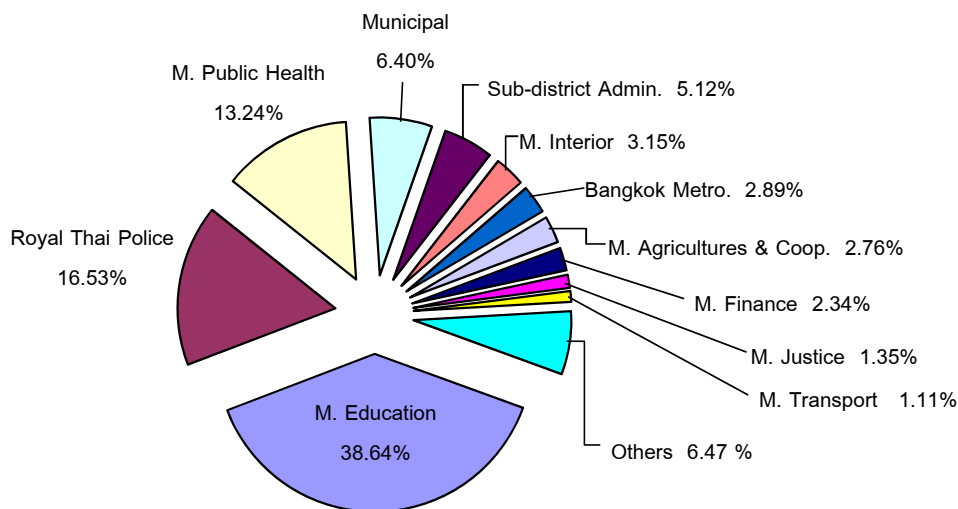
(Unit : Person)

Government Officials by Type of Service, Fiscal Year 2010



Type of Officials	Positions		Officials	
	Number	%	Number	%
Central and Provincial Administration	1,138,757	80.35	1,097,662	84.93
● Ordinary Civil Servants	382,585	26.99	362,553	28.05
● Teachers	468,446	33.05	458,688	35.49
● University Officials	40,664	2.87	39,184	3.03
● Legislative Body Officials	3,332	0.24	2,840	0.22
● Police Officials	218,676	15.43	213,664	16.53
● Public Prosecutors	3,358	0.24	3,158	0.24
● Judges	7,349	0.52	4,277	0.33
● Autonomous Organization Officials	14,347	1.01	13,298	1.03
Local Administration	278,505	19.65	194,804	15.07
● Bangkok Metropolitan Officials	39,415	2.78	37,389	2.89
- Ordinary	23,579	1.66	21,845	1.69
- Teachers	15,836	1.12	15,544	1.20
● Provincial Administration Organization Off.	15,506	1.09	8,489	0.66
● Sub-district Administration Organization Off.	97,740	6.90	66,164	5.12
● Municipal Officials	125,844	8.88	82,762	6.40
- Ordinary	95,518	6.74	55,568	4.30
- Teachers	30,326	2.14	27,194	2.10
Total	1,417,262	100.00	1,292,466	100.00

**Government Officials by Ministry,
Fiscal Year 2010**



Ministry	Positions		Officials	
	Number	%	Number	%
Central and Provincial Administration	1,138,757	80.35	1,097,662	84.93
Office of the Prime Minister	7,232	0.51	6,528	0.51
Ministry of Finance	31,983	2.26	30,296	2.34
Ministry of Foreign Affairs	1,758	0.12	1,562	0.12
Ministry of Tourism and Sports ⁽¹⁾	1,865	0.13	1,692	0.13
Ministry of Social Development and Human Security	3,675	0.26	3,381	0.26
Ministry of Agricultures and Cooperatives	38,208	2.70	35,670	2.76
Ministry of Transport	15,586	1.10	14,333	1.11
Ministry of Natural Resource and Environment	11,672	0.82	10,403	0.80
Ministry of Information and Communications Technology	2,107	0.15	1,947	0.15
Ministry of Energy	1,408	0.10	1,241	0.10
Ministry of Commerce	3,809	0.27	3,526	0.27
Ministry of Interior	43,380	3.06	40,762	3.15
Ministry of Justice	18,470	1.30	17,396	1.35
Ministry of Labour	6,666	0.47	6,183	0.48
Ministry of Culture ⁽²⁾	4,894	0.35	4,551	0.35
Ministry of Science and Technology	825	0.06	746	0.06
Ministry of Education ⁽³⁾	510,854	36.05	499,389	38.64
Ministry of Public Health	176,612	12.46	171,070	13.24
Ministry of Industry	3,708	0.26	3,399	0.26

**Government Officials by Ministry,
Fiscal Year 2010 (Cont.)**

Ministry	Positions		Officials	
	Number	%	Number	%
Autonomous Organizations	229,017	16.16	223,172	17.27
Office of His Majesty's Principal Private Secretary	520	0.04	451	0.03
Bureau of the Royal Household	2,478	0.17	2,301	0.18
Bureau of National Buddhism	1,060	0.07	865	0.07
Office of the Royal Development Project Board	118	0.01	112	0.01
The National Research Council of Thailand	217	0.02	203	0.02
The Royal Institute	74	0.01	67	0.01
Anti-Money Laundering Office	220	0.02	193	0.01
Office of the Attorney General ⁽⁴⁾	5,569	0.39	5,246	0.41
Of. of National Economic and Social Advisory Council	85	0.01	70	0.01
Royal Thai Police	218,676	15.43	213,664	16.53
Autonomous Organizations established by Constitution	21,696	1.53	17,575	1.36
Office of the Auditor General of Thailand	2,707	0.19	2,423	0.19
Of. of the National Counter Corruption Commission	760	0.05	669	0.05
Office of the Constitutional Court	129	0.01	118	0.01
Office of the Judiciary ⁽⁵⁾	16,169	1.14	12,746	0.99
Office of the Administrative Court	1,931	0.14	1,619	0.13
Autonomous Organizations of Legislative Body	3,332	0.24	2,840	0.22
The Secretariat of the House of Representatives	2,042	0.14	1,706	0.13
The Secretariat of the Senate	1,151	0.08	1,034	0.08
Office of the National Human Rights Commission	139	0.01	100	0.01
Local Administration	278,505	19.65	194,804	15.07
Bangkok Metropolitan Administration	39,415	2.78	37,389	2.89
Provincial Administration Organization	15,506	1.09	8,489	0.66
Sub-district Administration Organization	97,740	6.90	66,164	5.12
Municipal	125,844	8.88	82,762	6.40
Total	1,417,262	100.00	1,292,466	100.00

Notes: (1) including 1,133 teacher positions and 1,056 teachers

(2) including 1,111 teacher positions and 1,051 teachers

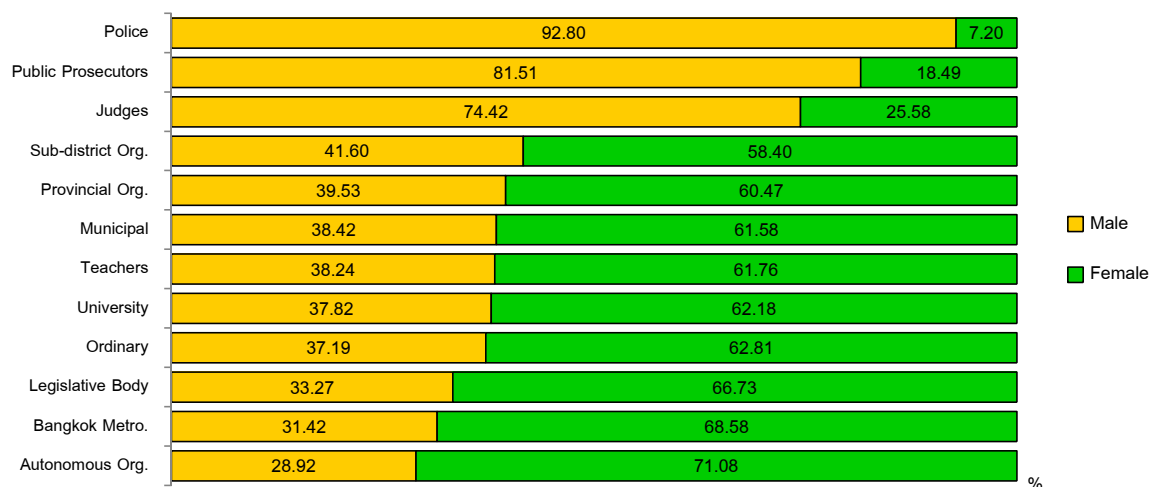
(3) including 466,202 teacher positions and 456,581 teachers; and

40,664 university official positions and 39,184 university officials

(4) including 3,358 public prosecutor positions and 3,158 public prosecutors

(5) including 7,349 judge positions and 4,277 judges

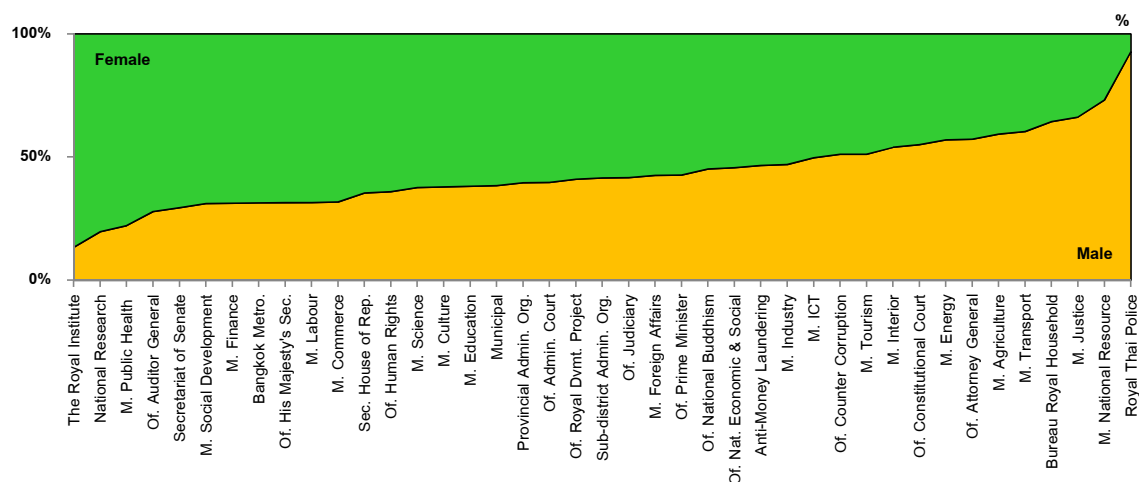
Government Officials by Type and Sex, Fiscal Year 2010



Type of Officials	2010				2009
	Total	Male	Female	% Female	% Female
Central and Provincial Administration	1,097,662	533,903	563,759	51.36	51.32
● Ordinary Civil Servants	362,553	134,843	227,710	62.81	62.50
● Teachers	458,688	175,406	283,282	61.76	61.70
● University Officials	39,184	14,821	24,363	62.18	62.95
● Legislative Body Officials	2,840	945	1,895	66.73	66.54
● Police Officials	213,664	198,285	15,379	7.20	5.81
● Public Prosecutors	3,158	2,574	584	18.49	18.25
● Judges	4,277	3,183	1,094	25.58	24.39
● Autonomous Organization Officials	13,298	3,846	9,452	71.08	73.30
Local Administration	194,804	74,418	120,386	61.80	61.66
● Bangkok Metropolitan Officials	37,389	11,747	25,642	68.58	68.59
- Ordinary	21,845	7,913	13,932	63.78	64.49
- Teachers	15,544	3,834	11,710	75.33	74.38
● Provincial Administration Organization Off.	8,489	3,356	5,133	60.47	59.23
● Sub-district Administration Organization Off.	66,164	27,521	38,643	58.40	57.97
● Municipal Officials	82,762	31,794	50,968	61.58	61.80
- Ordinary	55,568	24,371	31,197	56.14	55.35
- Teachers	27,194	7,423	19,771	72.70	72.90
Total	1,292,466	608,321	684,145	52.93	52.82

(Unit : Person)

Government Officials by Ministry and Sex, Fiscal Year 2010



Ministry	2010				2009
	Total	Male	Female	% Female	% Female
Central and Provincial Administration	1,097,662	533,903	563,759	51.36	51.32
Office of the Prime Minister	6,528	2,791	3,737	57.25	57.06
Ministry of Finance	30,296	9,486	20,810	68.69	67.98
Ministry of Foreign Affairs	1,562	665	897	57.43	57.30
Ministry of Tourism and Sports ⁽¹⁾	1,692	866	826	48.82	51.15
Ministry of Social Development and Human Security	3,381	1,053	2,328	68.86	66.73
Ministry of Agriculture and Cooperatives	35,670	21,172	14,498	40.64	40.03
Ministry of Transport	14,333	8,660	5,673	39.58	39.26
Ministry of Natural Resource and Environment	10,403	7,613	2,790	26.82	26.34
Ministry of Information and Communications Technology	1,947	968	979	50.28	50.43
Ministry of Energy	1,241	707	534	43.03	42.92
Ministry of Commerce	3,526	1,120	2,406	68.24	67.66
Ministry of Interior	40,762	21,990	18,772	46.05	45.77
Ministry of Justice	17,396	11,525	5,871	33.75	33.39
Ministry of Labour	6,183	1,948	4,235	68.49	68.40
Ministry of Culture ⁽²⁾	4,551	1,727	2,824	62.05	61.51
Ministry of Science and Technology	746	281	465	62.33	62.43
Ministry of Education ⁽³⁾	499,389	190,222	309,167	61.91	61.91
Ministry of Public Health	171,070	38,014	133,056	77.78	77.77
Ministry of Industry	3,399	1,599	1,800	52.96	52.74

(Unit : Person)

**Government Officials by Ministry and Sex,
Fiscal Year 2010 (Cont.)**

Ministry	2010				2009
	Total	Male	Female	% Female	% Female
Autonomous Organizations	223,172	203,522	19,650	8.80	7.50
Office of His Majesty's Principal Private Secretary	451	142	309	68.51	68.61
Bureau of the Royal Household	2,301	1,482	819	35.59	35.50
Bureau of National Buddhism	865	391	474	54.80	53.24
Office of the Royal Development Project Board	112	46	66	58.93	56.88
The National Research Council of Thailand	203	40	163	80.30	79.90
The Royal Institute	67	9	58	86.57	85.94
Anti-Money Laundering Office	193	90	103	53.37	54.08
Office of the Attorney General ⁽⁴⁾	5,246	3,005	2,241	42.72	42.51
Of. of National Economic and Social Advisory Council	70	32	38	54.29	57.33
Royal Thai Police	213,664	198,285	15,379	7.20	5.81
Autonomous Organizations established by Constitution	17,575	7,029	10,546	60.01	61.20
Office of the Auditor General of Thailand	2,423	676	1,747	72.10	72.32
Of. of the National Counter Corruption Commission	669	342	327	48.88	48.63
Office of the Constitutional Court	118	65	53	44.92	42.98
Office of the Judiciary ⁽⁵⁾	12,746	5,304	7,442	58.39	59.75
Office of the Administrative Court	1,619	642	977	60.35	61.60
Autonomous Organizations of Legislative Body	2,840	945	1,895	66.73	66.54
The Secretariat of the House of Representatives	1,706	604	1,102	64.60	64.65
The Secretariat of the Senate	1,034	305	729	70.50	69.76
Office of the National Human Rights Commission	100	36	64	64.00	64.89
Local Administration	194,804	74,418	120,386	61.80	61.66
Bangkok Metropolitan Administration	37,389	11,747	25,642	68.58	68.59
Provincial Administration Organization	8,489	3,356	5,133	60.47	59.23
Sub-district Administration Organization	66,164	27,521	38,643	58.40	57.97
Municipal	82,762	31,794	50,968	61.58	61.80
Total	1,292,466	608,321	684,145	52.93	33.91

Notes: (1) including 1,056 teachers

(Unit : Person)

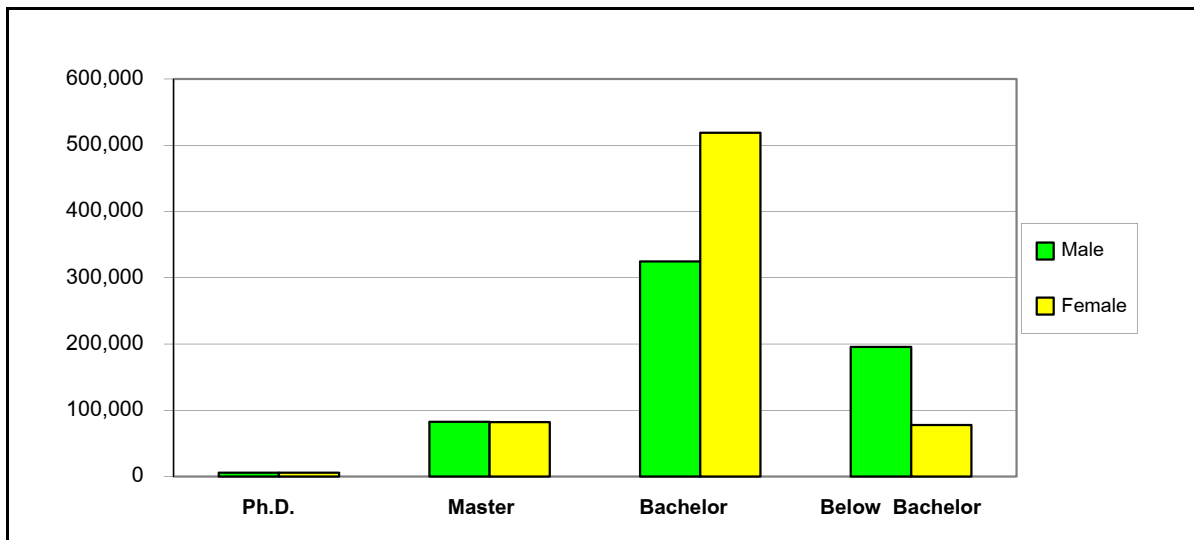
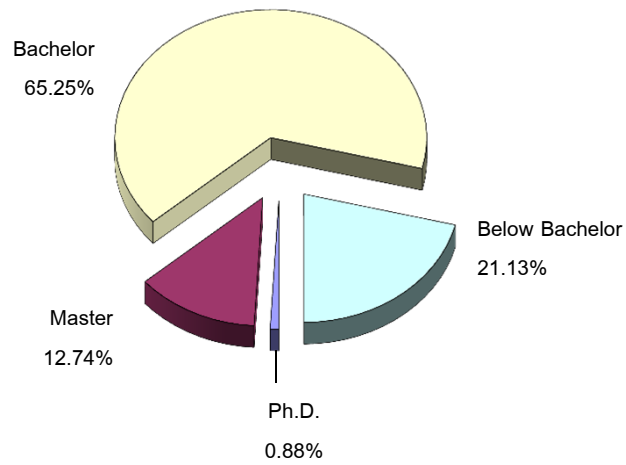
(2) including 1,051 teachers

(3) including 456,581 teachers and 39,184 university officials

(4) including 3,158 public prosecutors

(5) including 4,277 judges

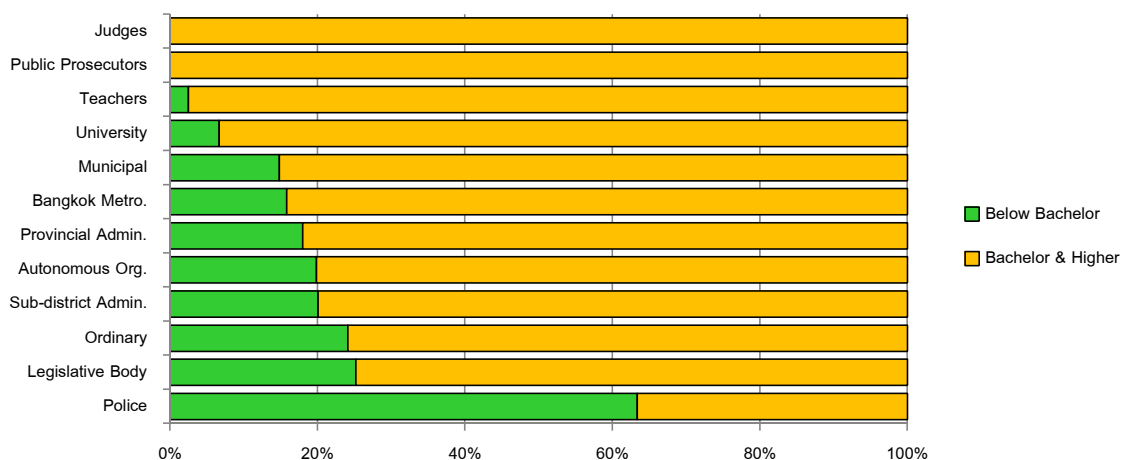
Government Officials by Education, Fiscal Year 2010



Level of Education	Number of Officials			%		Fiscal Year	
	Total	Male	Female	Male	Female	2010	2009
Bachelor Degree or Above	1,019,374	412,637	606,737	40.48	59.52	78.87	78.71
● Ph.D.	11,402	5,612	5,790	49.22	50.78	0.88	0.91
● Master Degree	164,618	82,484	82,134	50.11	49.89	12.74	12.67
● Bachelor Degree	843,355	324,541	518,813	38.48	61.52	65.25	65.13
Below Bachelor Degree	273,092	195,684	77,408	71.66	28.34	21.13	21.29
Total	1,292,466	608,321	684,145	47.07	52.93	100.00	100.00

(Unit : Person)

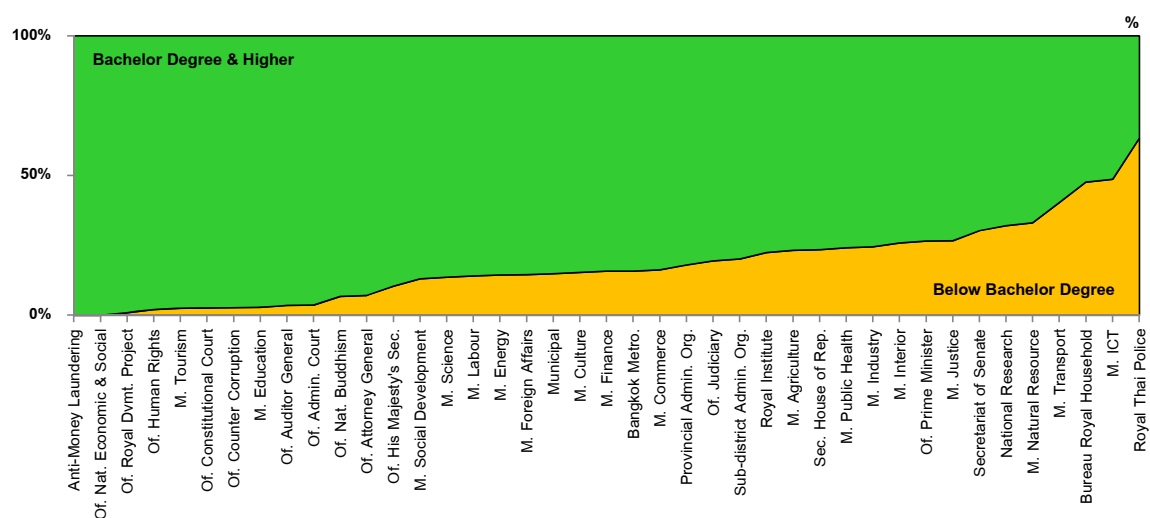
Government Officials by Type and Education, Fiscal Year 2010



Type of Officials	2010							2009
	Grand Total	Below Bach.	Bachelor Degree & Higher				% Bach. & Higher	% Bach. & Higher
			Total	Bach.	Mast.	Ph.D.		
Central and Provincial Admin.	1,097,662	240,095	857,567	708,401	137,904	11,262	78.13	78.16
● Ordinary Civil Servants	362,553	87,420	275,133	238,335	35,594	1,204	75.89	76.10
● Teachers	458,688	11,329	447,359	374,252	72,580	527	97.53	97.52
● University Officials	39,184	2,612	36,572	10,480	16,877	9,215	93.33	92.20
● Legislative Body Officials	2,840	716	2,124	1,377	741	6	74.79	73.72
● Police Officials	213,664	135,377	78,287	70,106	7,929	252	36.64	35.13
● Public Prosecutors	3,158		3,158	2,280	865	13	100.00	100.00
● Judges	4,277		4,277	2,636	1,617	24	100.00	100.00
● Autonomous Org. Officials	13,298	2,641	10,657	8,935	1,701	21	80.14	79.35
Local Administration	194,804	32,997	161,807	134,954	26,714	139	83.06	82.00
● Bangkok Metropolitan Officials	37,389	5,908	31,481	27,441	4,006	34	84.20	83.49
- Ordinary	21,845	5,762	16,083	14,015	2,041	27	73.62	72.08
- Teachers	15,544	146	15,398	13,426	1,965	7	99.06	99.59
● Provincial Admin. Org. Off.	8,489	1,528	6,961	5,418	1,538	5	82.00	80.11
● Sub-district Admin. Org. Off.	66,164	13,293	52,871	44,837	8,022	12	79.91	78.56
● Municipal Officials	82,762	12,268	70,494	57,258	13,149	88	85.18	84.63
- Ordinary	55,568	12,056	43,512	34,740	8,711	62	78.30	76.31
- Teachers	27,194	212	26,982	22,518	4,438	26	99.22	98.95
Total	1,292,466	273,092	1,019,374	843,355	164,618	11,402	78.87	78.71

(Unit : Person)

Government Officials by Ministry and Education, Fiscal Year 2010



Ministry	2010							2009
	Grand Total	Below Bach.	Bachelor Degree & Higher				% Bach. & Higher	% Bach. & Higher
			Total	Bach.	Mast.	Ph.D.		
Central & Provincial Administration	1,097,662	240,095	857,567	708,401	137,904	11,262	78.13	78.16
Office of the Prime Minister	6,528	1,735	4,793	2,869	1,855	69	73.42	72.62
Ministry of Finance	30,296	4,775	25,521	19,386	6,070	65	84.24	84.27
Ministry of Foreign Affairs	1,562	227	1,335	508	730	97	85.47	86.27
Ministry of Tourism and Sports ⁽¹⁾	1,692	42	1,650	552	1,084	14	97.52	98.05
M. Social Development & Human Sec.	3,381	439	2,942	2,249	689	4	87.02	85.14
M. of Agricultures and Cooperatives	35,670	8,300	27,370	21,840	5,341	189	76.73	78.56
Ministry of Transport	14,333	5,784	8,549	7,190	1,304	55	59.65	55.12
M. Natural Resource & Environment	10,403	3,443	6,960	4,901	1,954	105	66.90	78.67
M. of Information & Comm. Tech.	1,947	947	1,000	694	299	7	51.36	56.40
Ministry of Energy	1,241	178	1,063	683	353	27	85.66	83.25
Ministry of Commerce	3,526	572	2,954	1,838	1,094	22	83.78	80.76
Ministry of Interior	40,762	10,536	30,226	23,984	6,214	28	74.15	73.72
Ministry of Justice	17,396	4,636	12,760	10,200	2,536	24	73.35	72.91
Ministry of Labour	6,183	869	5,314	4,580	726	8	85.95	86.20
Ministry of Culture ⁽²⁾	4,551	695	3,856	2,786	1,052	18	84.73	84.66
Ministry of Science and Technology	746	101	645	413	200	32	86.46	85.22
Ministry of Education ⁽³⁾	499,389	14,260	485,129	385,745	89,574	9,810	97.14	97.04
Ministry of Public Health	171,070	41,334	129,736	126,883	2,534	319	75.84	75.75
Ministry of Industry	3,399	832	2,567	2,012	535	20	75.52	77.63

(Unit : Person)

**Government Officials by Ministry and Education,
Fiscal Year 2010 (Cont.)**

Ministry	2010							2009
	Grand Total	Below Bach.	Bachelor Degree & Higher				% Bach. & Higher	% Bach. & Higher
			Total	Bach.	Mast.	Ph.D.		
Autonomous Organizations	223,172	137,033	86,139	76,140	9,701	298	38.60	37.10
Of. His Majesty's Principal Private Sec.	451	47	404	271	126	7	89.58	89.39
Bureau of the Royal Household	2,301	1,097	1,204	994	195	15	52.33	48.85
Bureau of National Buddhism	865	58	807	617	188	2	93.29	85.89
Of. of the Royal Dvmt. Project Board	112	1	111	41	70		99.11	98.17
The Nat. Research Council of Thailand	203	65	138	44	88	6	67.98	66.83
The Royal Institute	67	15	52	37	13	2	77.61	79.69
Anti-Money Laundering Office	193		193	99	93	1	100.00	97.96
Office of the Attorney General ⁽⁴⁾	5,246	373	4,873	3,881	979	13	92.89	92.52
Of. Nat.Econ.&Social Advisory Council	70		70	50	20		100.00	100.00
Royal Thai Police	213,664	135,377	78,287	70,106	7,929	252	36.64	35.13
Auto. Org. estd. by Constitution	17,575	2,641	14,934	11,571	3,318	45	84.97	84.45
Of. of the Auditor General of Thailand	2,423	85	2,338	1,752	584	2	96.49	96.21
Of. Nat. Counter Corruption Comm.	669	18	651	542	104	5	97.31	97.26
Office of the Constitutional Court	118	3	115	58	54	3	97.46	98.25
Office of the Judiciary ⁽⁵⁾	12,746	2,477	10,269	8,142	2,101	26	80.57	79.84
Office of the Administrative Court	1,619	58	1,561	1,077	475	9	96.42	95.71
Auto. Org. of Legislative Body	2,840	716	2,124	1,377	741	6	74.79	73.72
The Secretariat of the House of Rep.	1,706	401	1,305	781	520	4	76.49	74.65
The Secretariat of the Senate	1,034	313	721	546	174	1	69.73	70.05
Of. of the Nat. Human Rights Comm.	100	2	98	50	47	1	98.00	97.87
Local Administration	194,804	32,997	161,807	134,954	26,714	139	83.06	82.00
Bangkok Metropolitan Administration	37,389	5,908	31,481	27,441	4,006	34	84.20	83.49
Provincial Administration Organization	8,489	1,528	6,961	5,418	1,538	5	82.00	80.11
Sub-district Administration Organization	66,164	13,293	52,871	44,837	8,022	12	79.91	78.56
Municipal	82,762	12,268	70,494	57,258	13,149	88	85.18	84.63
Total	1,292,466	273,092	1,019,374	843,355	164,618	11,402	78.87	78.71

Notes: (1) including 1,056 teachers

(Unit : Person)

(2) including 1,051 teachers

(3) including 456,581 teachers and 39,184 university officials

(4) including 3,158 public prosecutors

(5) including 4,277 judges

Number of Government Officials by Type and Level, Fiscal Year 2010

Type of Officials	Level											Total
	1	2	3	4	5	6	7	8	9	10	11	
University Officials	1	14	202	1,296	3,038	8,046	9,746	11,992	4,554	253	42	39,184
Legislative Body Officials	181	131	404	399	526	468	249	343	113	20	6	2,840
Autonomous Organization Officials			222	271	414	662	613	261	82	14	2	2,541
Provincial Administration Organization Officials	152	426	1,140	920	1,255	2,089	1,961	488	58			8,489
Sub-district Administration Organization Officials	3,972	9,232	16,022	12,506	8,823	9,104	6,417	88				66,164

Type of Officials	Level													Total
	General Position				Knowledge Worker Position					Managerial Pos.		Executive Pos.		
	O1	O2	O3	O4	K1	K2	K3	K4	K5	M1	M2	S1	S2	
Ordinary Civil Servants	17,975	89,648	6,749		44,924	169,273	23,773	2,902	217	3,547	2,437	526	582	362,553
Autonomous Organization Officials *	2,622	1,579	34		3,002	2,501	592	95	4	179	126	7	16	10,757

Type of Officials	Level								Total		
	Kadi	Senior Judge		Assistant Judge		1	2	3		4	5
Judges	8	237		118		101	822	2,293	697	1	4,277

Type of Officials	Level								Total			
	Senior Public Pros.		Asst. Public Pros.		2	3	4	5		6	7	8
Public Prosecutors	251		163		361	886	578	449	452	17	1	3,158

Type of Officials	Level															Total
	General Position				Knowledge Worker Position					Teacher Position Level						
	O1	O2	O3	O4	K1	K2	K3	K4	K5	Asst. Tch.	N.L.1	N.L.2	N.L.3	N.L.4	N.L.5	
Teachers	426	1,740	217		1,141	5,059	2,350	8		25,267	44,540	279,027	97,517	1,393	3	458,688

Type of Officials	Level																Total
	Ordinary Position Level											Teacher Position Level					
	1	2	3	4	5	6	7	8	9	10	11	Asst. Tch.	N.L.1	N.L.2	N.L.3	N.L.4	
Bangkok Metropolitan Officials	483	1,119	3,051	1,789	5,062	5,637	3,486	992	191	34	1	2,217	5,368	6,982	965	12	37,389
Municipal Officials	1599	4,675	9,493	10,112	9,301	11,705	6,469	1,982	232	4,169	7,933	10,886	3,984	222			82,762

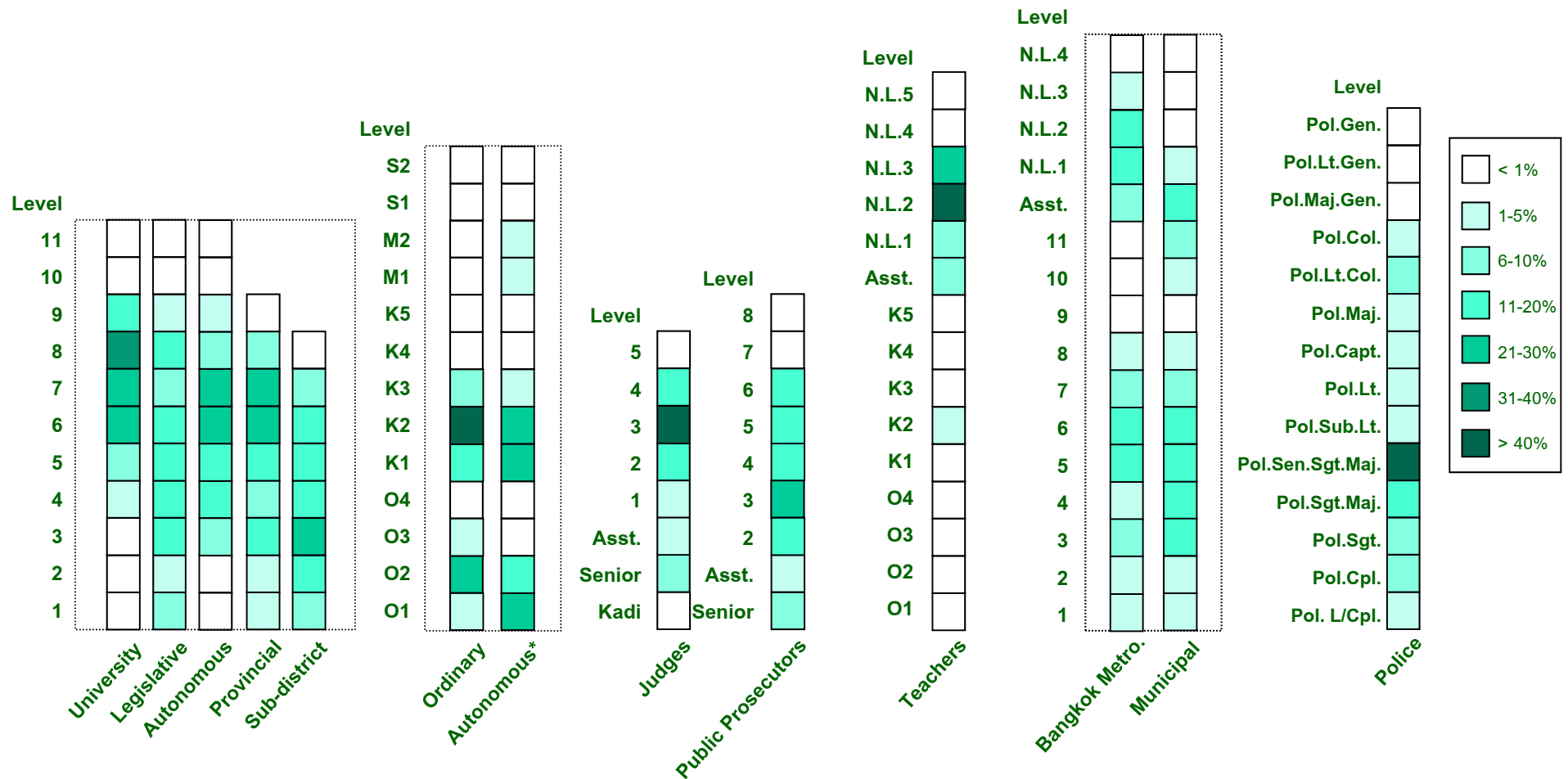
Type of Officials	Level															Total
	Pol.	Pol.	Pol.	Pol.	Pol.Sen.	Pol.	Pol.	Pol.	Pol.	Pol.	Pol.	Pol.	Pol.	Pol.	Pol.Gen.	
Police Officials	L/Cpl.	Cpl.	Sgt.	Sgt.Maj.	Sgt.Maj.	Sub.Lt.	Lt.	Capt.	Maj.	Lt.Col.	Col.	Maj.Gen.	Lt.Gen.			213,664
	11,511	11,777	13,512	31,211	111,411	3,222	6,066	4,666	3,857	12,823	3,183	347	63	15		213,664

Notes: * - Office of the Judiciary, Office of the Administrative Court, and Office of National Counter Corruption Commission have adopted the new position category of ordinary civil servants.

Grand Total **1,292,466**

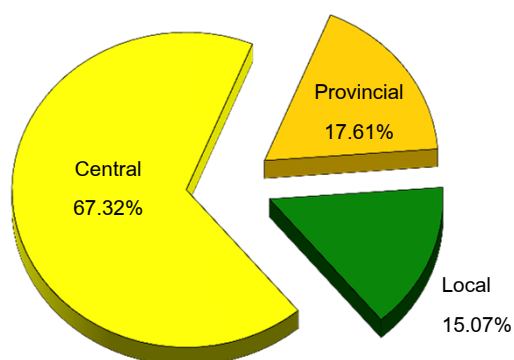
(Unit : Person)

Distribution of Government Officials by Type & Level, Fiscal Year 2010



Notes: * - Office of the Judiciary, Office of the Administrative Court, and Office of National Counter Corruption Commission have adopted the new position category of ordinary civil servants.

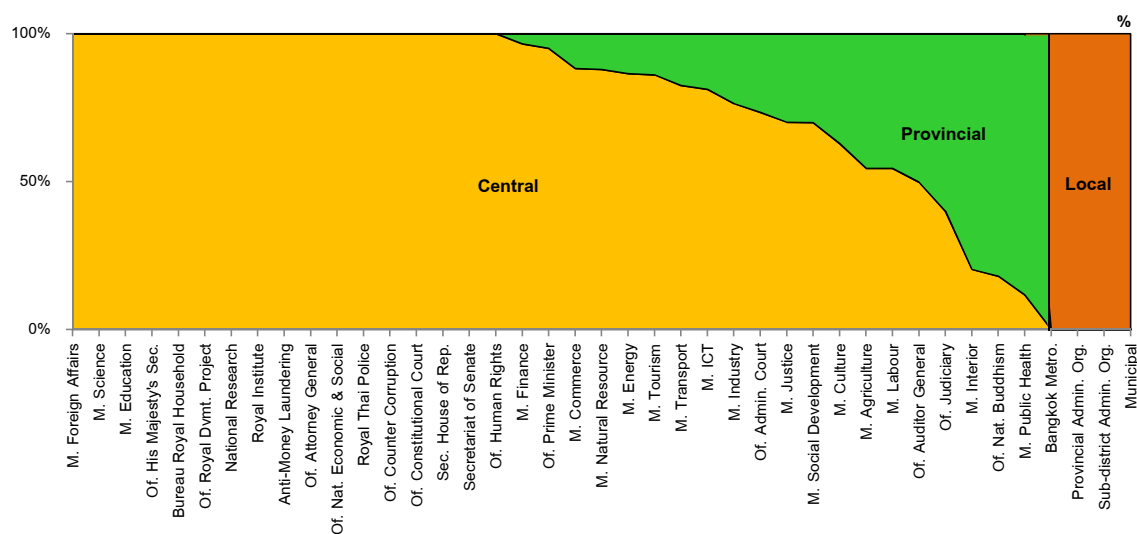
**Government Officials by Type and Type of Government Administration,
Fiscal Year 2010**



Type of Officials	Total	Central	Provincial	Local
Central and Provincial Administration	1,097,662	870,096	227,566	
● Ordinary Civil Servants	362,553	144,285	218,268	
● Teachers	458,688	458,688		
● University Officials	39,184	39,184		
● Legislative Body Officials	2,840	2,840		
● Police Officials	213,664	213,664		
● Public Prosecutors	3,158	3,158		
● Judges	4,277	2,181	2,096	
● Autonomous Organization Officials	13,298	6,096	7,202	
Local Administration	194,804			194,804
● Bangkok Metropolitan Officials	37,389			37,389
- Ordinary	21,845			21,845
- Teachers	15,544			15,544
● Provincial Administration Organization Off.	8,489			8,489
● Sub-district Administration Organization Off.	66,164			66,164
● Municipal Officials	82,762			82,762
- Ordinary	55,568			55,568
- Teachers	27,194			27,194
Total	1,292,466	870,096	227,566	194,804

(Unit : Person)

Government Officials by Ministry and Type of Government Administration, Fiscal Year 2010



Ministry	Total	Central	Provincial	Local
Central and Provincial Administration	1,097,662	870,096	227,566	
Office of the Prime Minister	6,528	6,202	326	
Ministry of Finance	30,296	29,254	1,042	
Ministry of Foreign Affairs	1,562	1,562		
Ministry of Tourism and Sports ⁽¹⁾	1,692	1,457	235	
M. of Social Development and Human Security	3,381	2,364	1,017	
Ministry of Agriculture and Cooperatives	35,670	19,445	16,225	
Ministry of Transport	14,333	11,820	2,513	
M. of Natural Resource and Environment	10,403	9,149	1,254	
M. of Information and Communications Tech.	1,947	1,581	366	
Ministry of Energy	1,241	1,073	168	
Ministry of Commerce	3,526	3,112	414	
Ministry of Interior	40,762	8,287	32,475	
Ministry of Justice	17,396	12,194	5,202	
Ministry of Labour	6,183	3,369	2,814	
Ministry of Culture ⁽²⁾	4,551	2,861	1,690	
Ministry of Science and Technology	746	746		
Ministry of Education ⁽³⁾	499,389	499,389		
Ministry of Public Health	171,070	20,055	151,015	
Ministry of Industry	3,399	2,596	803	

(Unit : Person)

**Government Officials by Ministry and Type of Government Administration,
Fiscal Year 2010 (Cont.)**

Ministry	Total	Central	Provincial	Local
Autonomous Organizations	223,172	222,463	709	
Of. of His Majesty's Principal Private Secretary	451	451		
Bureau of the Royal Household	2,301	2,301		
Bureau of National Buddhism	865	156	709	
Office of the Royal Development Project Board	112	112		
The National Research Council of Thailand	203	203		
The Royal Institute	67	67		
Anti-Money Laundering Office	193	193		
Office of the Attorney General ⁽⁴⁾	5,246	5,246		
Of. of National Econ. & Social Advisory Council	70	70		
Royal Thai Police	213,664	213,664		
Autonomous Org. estd. by Constitution	17,575	8,277	9,298	
Office of the Auditor General of Thailand	2,423	1,207	1,216	
Of. of National Counter Corruption Commission	669	669		
Office of the Constitutional Court	118	118		
Office of the Judiciary ⁽⁵⁾	12,746	5,095	7,651	
Office of the Administrative Court	1,619	1,188	431	
Autonomous Org. of Legislative Body	2,840	2,840		
The Secretariat of the House of Representatives	1,706	1,706		
The Secretariat of the Senate	1,034	1,034		
Of. of the National Human Rights Commission	100	100		
Local Administration	194,804			194,804
Bangkok Metropolitan Administration	37,389			37,389
Provincial Administration Organization	8,489			8,489
Sub-district Administration Organization	66,164			66,164
Municipal	82,762			82,762
Total	1,292,466	870,096	227,566	194,804

Notes: (1) including 1,056 teachers

(Unit : Person)

(2) including 1,051 teachers

(3) including 456,581 teachers and 39,184 university officials

(4) including 3,158 public prosecutors

(5) including 4,277 judges

Government Officials by Ministry and Location,

Fiscal Year 2010

Ministry	Total	Location						
		Foreign Countries	Bangkok	Northern	Central	Eastern	North Eastern	Southern
Of. Prime Min.	6,528	2	5,170	358	191	84	350	373
M. Finance	30,296	7	13,691	3,363	4,870	1,542	3,710	3,113
M. Foreign Af.	1,562	681	881					
M. Tourism ⁽¹⁾	1,692		396	272	360	76	305	283
M. Social Dev.	3,381		1,174	504	625	113	535	430
M. Agricultures	35,670		9,249	6,083	6,386	1,284	8,371	4,297
M. Transport	14,333		5,842	2,281	1,902	512	2,302	1,494
M. Natural Res.	10,403		3,855	2,273	1,225	285	1,579	1,186
M. ICT.	1,947		1,183	207	107	23	220	207
M. Energy	1,241		1,073	40	48	9	44	27
M. Commerce	3,526	133	717	208	2,050	55	206	157
M. Interior	40,762		7,761	7,356	7,278	1,384	10,690	6,293
M. Justice	17,396		4,881	2,435	4,366	736	2,810	2,168
M. Labour	6,183	22	1,911	823	1,575	242	915	695
M. Culture ⁽²⁾	4,551		1,707	605	756	133	805	545
M. Science	746	2	744					
M. Education ⁽³⁾	499,389		35,293	97,093	89,883	15,843	185,942	75,335
M. Pub. Health	171,070		6,420	35,892	43,757	8,275	47,888	28,838
M. Industry	3,399	18	2,205	282	284	85	300	225
Auto. Org. ⁽⁴⁾	223,172	10	46,200	38,851	39,459	9,069	49,663	39,920
A.O.est.Const. ⁽⁵⁾	20,415		11,125	2,032	2,374	722	2,447	1,716
Local Admin.	194,804		37,389	30,468	33,203	8,441	61,700	23,603
Total	1,292,466	875	198,867	231,426	240,699	48,913	380,782	190,905
%	100.00	0.07	15.39	17.91	18.62	3.78	29.46	14.77

Notes: (1) including 1,056 teachers

(2) including 1,051 teachers

(3) including 456,581 teachers and 39,184 university officials

(4) including 3,158 public prosecutors and 213,664 police officials

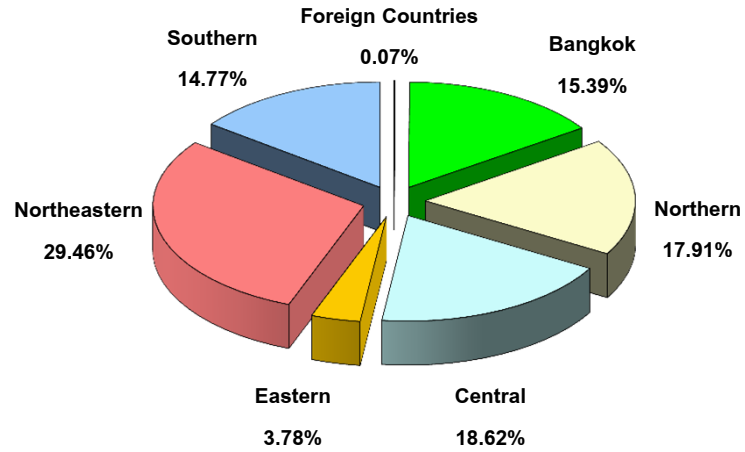
(5) including 2,840 legislative body officials, 4,277 judges

and 13,298 autonomous organization officials

(Unit : Person)

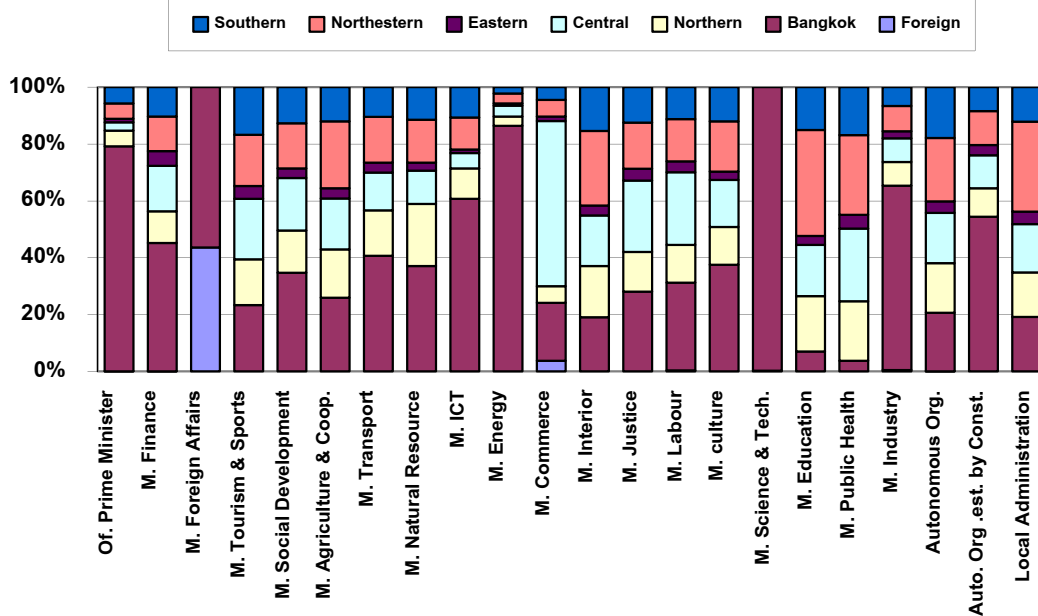
Government Officials by Location,

Fiscal Year 2010



Government Officials by Ministry and Location,

Fiscal Year 2010

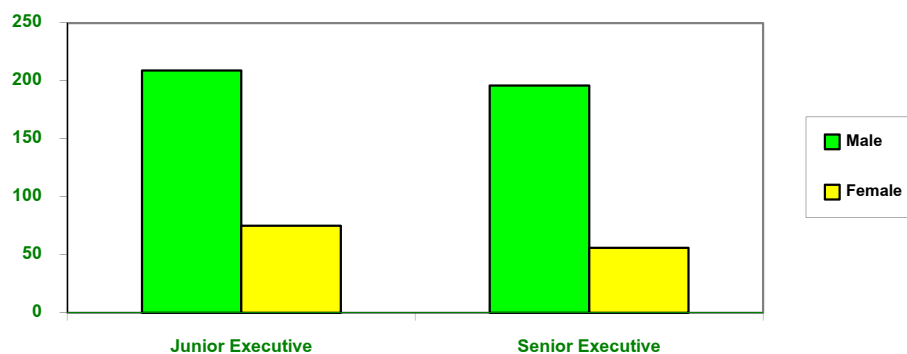


Civilian Workforce in High-Level Positions

Position	2010				2009
	Total	Male	Female	%Female	%Female
Ordinary Civil Servants	1,058	867	191	18.05	18.23
Executive	536	405	131	24.44	24.18
Provincial Governor	73	73		0.00	0.00
Vice Provincial Governor	168	161	7	4.17	4.22
Deputy Governor	74	74		0.00	0.00
Inspector-General	121	95	26	21.49	26.67
Ambassador	70	59	11	15.71	15.49
Ministerial Internal Auditor	16		16	100.00	100.00
Police Officials	418	414	4	0.96	1.03
Commissioner-General	1	1		0.00	0.00
Deputy Commissioner-General	14	14		0.00	0.00
Assistant Commissioner-General	17	17		0.00	0.00
Commissioner	45	45		0.00	0.00
Deputy Commissioner	150	150		0.00	0.00
Commander	191	187	4	2.09	1.93
Judges	93	86	7	7.53	8.70
President of the Supreme Court	1	1		0.00	0.00
Vice-President of the Supreme Court	6	6		0.00	0.00
Senior Chief Justice of the Supreme Court	25	23	2	8.00	4.00
Chief Justice of the Court of Appeals / Region	51	47	4	7.84	12.00
Chief Justice of Civil Court / Criminal Court	10	9	1	10.00	10.00
Public Prosecutors	79	74	5	6.33	3.85
Attorney General	1	1		0.00	0.00
Deputy Attorney General	6	6		0.00	0.00
Inspector General	11	11		0.00	0.00
Director-General	61	56	5	8.20	5.00
Officials of Autonomous Organizations estd. by Constitution	24	18	6	25.00	27.27
Executive	24	18	6	25.00	27.27
Legislative Body Officials	18	11	7	38.89	31.58
Executive	18	11	7	38.89	31.58
University Officials	592	430	162	27.36	26.92
President of University	75	67	8	10.67	13.33
Vice-President of University	517	363	154	29.79	28.87

(Unit :Person)

Number of Executives, Fiscal Year 2010



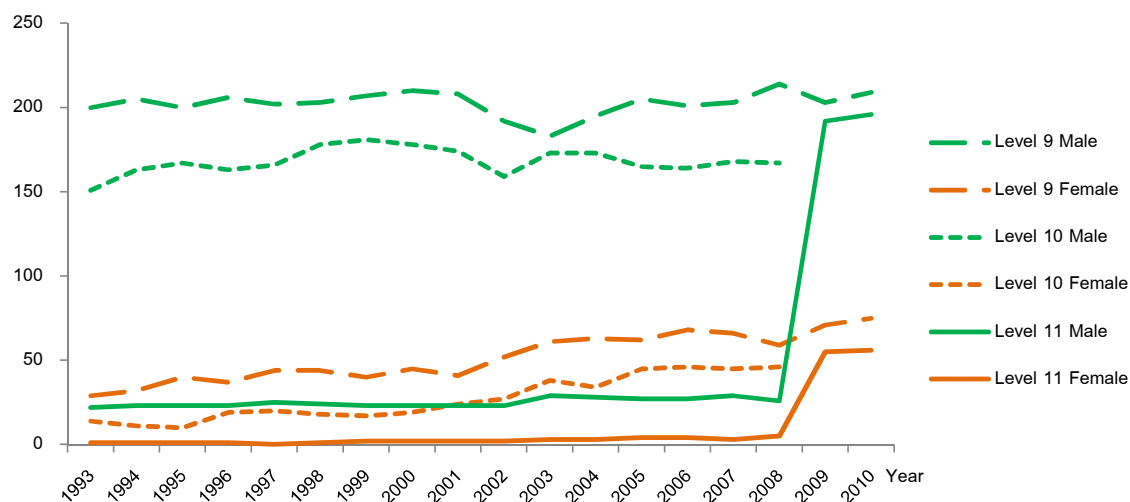
Position	Number			%	
	Total	Male	Female	Male	Female
Senior Executive	252	196	56	77.78	22.22
Permanent Secretary	19	17	2	89.47	10.53
Director-General / Secretary-General	125	97	28	77.60	22.40
Deputy Permanent Secretary / Deputy Secretary-General / Deputy Director-General	108	82	26	75.93	24.07
Junior Executive	284	209	75	73.59	26.41
Deputy Director-General / Deputy Secretary-General	284	209	75	73.59	26.41
Total	536	405	131	75.56	24.44

(Unit : Person)

Notes: (1) Executives refer to heads or deputy heads of agencies at the ministerial or departmental levels

(2) not including Executives of Office of His Majesty's Principal Private Secretary and Bureau of Royal Household

Senior Executives by Level and Sex, Fiscal Year 1993-2010



Year	Level 9-11			Level 9		Level 10		Level 11		% Female			
	Total	Male	Fem.	Male	Fem.	Male	Fem.	Male	Fem.	9-11	9	10	11
1993	417	373	44	200	29	151	14	22	1	10.55	12.66	8.48	4.35
1994	435	391	44	205	32	163	11	23	1	10.11	13.50	6.32	4.17
1995	441	390	51	200	40	167	10	23	1	11.56	16.67	5.65	4.17
1996	449	392	57	206	37	163	19	23	1	12.69	15.23	10.44	4.17
1997	457	393	64	202	44	166	20	25	0	14.00	17.89	10.75	0.00
1998	468	405	63	203	44	178	18	24	1	13.46	17.81	9.18	4.00
1999	470	411	59	207	40	181	17	23	2	12.55	16.19	8.59	8.00
2000	477	411	66	210	45	178	19	23	2	13.84	17.65	9.64	8.00
2001	472	405	67	208	41	174	24	23	2	14.19	16.47	12.12	8.00
2002	455	374	81	192	52	159	27	23	2	17.80	21.31	14.52	8.00
2003	487	385	102	183	61	173	38	29	3	20.94	25.00	18.01	9.38
2004	496	396	100	195	63	173	34	28	3	20.16	24.42	16.43	9.68
2005	508	397	111	205	62	165	45	27	4	21.85	23.22	21.43	12.90
2006	510	392	118	201	68	164	46	27	4	23.14	25.28	21.90	12.90
2007	514	400	114	203	66	168	45	29	3	22.18	24.54	21.13	9.38
2008	517	407	110	214	59	167	46	26	5	21.28	21.61	21.60	16.13
Year	Junior & Senior Exec.			Junior		Senior		% Female					
	Total	Male	Female	Male	Female	Male	Female	Jr.-Sr.	Jr.	Sr.			
2009	521	395	126	203	71	192	55	24.18	25.91	22.27			
2010	536	405	131	209	75	196	56	24.44	26.41	22.22			

(Unit : Person)

- Notes: (1) Senior Executives refer to heads or deputy heads of agencies at the ministerial or departmental levels
 (2) not including Executives of Office of His Majesty's Principal Private Secretary and Bureau of Royal Household
 (3) "Senior executive" equals to "Level 11" and "Junior executive" equals to "Level 9"

**Government Officials, Permanent Employees, Temporary Employees,
Government Employees & Local Temporary Employees, Fiscal Year 2010**

Ministry	Government Officials	Permanent Employees	Temporary Employees	Government Employees	Local Temp. Employees
Central and Provincial Administration	1,097,662	160,315	362,095	101,966	0
Office of the Prime Minister	6,528	991	841	1,012	0
Ministry of Finance	30,296	3,294	5,031	2,123	0
Ministry of Foreign Affairs	1,562	133	279	14	0
Ministry of Tourism and Sports	1,692	471	555	194	0
Ministry of Social Development & Human Security	3,381	2,644	0	3,001	0
Ministry of Agriculture and Cooperatives	35,670	32,270	100,880	25,413	0
Ministry of Transport	14,333	10,511	24,007	4,202	0
Ministry of Natural Resource and Environment	10,403	8,424	7,210	19,855	0
M. of Information & Communications Technology	1,947	161	567	1,294	0
Ministry of Energy	1,241	347	691	692	0
Ministry of Commerce	3,526	633	271	538	0
Ministry of Interior	40,762	5,499	632	3,382	0
Ministry of Justice	17,396	1,858	4	6,310	0
Ministry of Labour	6,183	1,815	1,007	1,579	0
Ministry of Culture	4,551	572	635	372	0
Ministry of Science and Technology	746	198	215	118	0
Ministry of Education	499,389	48,575	88,422	26,019	0
Ministry of Public Health	171,070	34,787	124,275	4,587	0
Ministry of Industry	3,399	1,204	708	283	0
Autonomous Organizations	223,172	4,694	2,426	517	0
Of. of His Majesty's Principal Private Secretary	451	31	0	71	0
Bureau of the Royal Household	2,301	2,749	1,986	0	0
Bureau of National Buddhism	865	146	226	6	0
Of. of the Royal Development Project Board	112	27	0	54	0
The National Research Council of Thailand	203	52	209	114	0
The Royal Institute	67	18	5	5	0
Anti-Money Laundering Office	193	0	0	25	0
Office of the Attorney General	5,246	280	0	146	0
Of. of Nat. Economic & Social Advisory Council	70	0	0	75	0
Royal Thai Police	213,664	1,391	0	21	0

(Unit : Person)

**Government Officials, Permanent Employees, Temporary Employees,
Government Employees & Local Temporary Employees, Fiscal Year 2010 (Cont.)**

Ministry	Government Officials	Permanent Employees	Temporary Employees	Government Employees	Local Temp. Employees
<i>Autonomous Org. estd. by Constitution</i>	17,575	1,035	3,439	346	0
Office of the Auditor General of Thailand	2,423	94	500	0	0
Of.of National Counter Corruption Commission	669	36	282	0	0
Office of the Constitutional Court	118	20	23	0	0
Office of the Judiciary	12,746	862	2,412	0	0
Office of the Administrative Court	1,619	23	222	346	0
<i>Autonomous Org. of Legislative Body</i>	2,840	199	0	115	0
The Secretariat of the House of Representatives	1,706	136	0	76	0
The Secretariat of the Senate	1,034	63	0	39	0
Of.of the National Human Rights Commission	100	0	0	0	0
<i>Local Administration</i>	194,804	53,482	18,711	0	123,649
Bangkok Metropolitan Administration	37,389	39,881	18,711	0	0
Provincial Administration Organization	8,489	1,301	0	0	5,583
Sub-district Administration Organization	66,164	2,872	0	0	45,144
Municipal	82,762	9,428	0	0	72,922
Total	1,292,466	213,797	380,806	101,966	123,649

(Unit : Person)

The background of the page is a solid orange color. Overlaid on this are several diagonal stripes that originate from the left edge and extend towards the right. The stripes are in various shades of orange and grey, creating a layered, geometric effect. The stripes are of varying widths and are arranged in a way that they appear to recede into the distance.

*Prepared by Bureau of Classification and Compensation Development
Office of the Civil Service Commission*